



BRIDGE DISTRICT
CONNECTIVITY PLAN
PUBLIC WORKSHOP #2

Hudson, NY

September 22, 2021





INTRODUCTION

Today's Objectives

1. Present conceptual material palette
2. Present revised corner treatments
3. Gather feedback and discuss next steps

HUDSON, NY





INTRODUCTION

Phase 2 - Design and Implementation

Public Workshop	July 27, 2021
Materials & Furnishing Development	July-August 2021
HPC Presentation	August 13, 2021
Public Workshop #2	September 22, 2021
HPC Coordination	October - December 2021
Town Council Presentation	December 2021
Construction Document Development	Fall 2021-Spring 2022
Begin Construction	Spring 2022

HUDSON, NY





INTRODUCTION

Project Area



HUDSON, NY



23B

TO CITY HALL

TO HUDSON AREA LIBRARY

Charles Williams Park

INTRODUCTION

Key Findings



Gaps in Pedestrian Network



Inaccessible Intersections



High Design Speeds



**Uncomfortable Cycling
Conditions**



Disconnected Waterfront

HUDSON, NY



INTRODUCTION

Goals



GOAL #1

**Make Streets Safe
& Accessible for All**



GOAL #2

**Reconnect the
Waterfront**



GOAL #3

**Celebrate the
Historic Integrity**

HUDSON, NY





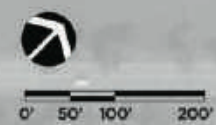
INTRODUCTION

Project Area

- FRONT & WARREN INTERSECTION
- INTERSECTION IMPROVEMENTS
- ALLEY INTERSECTION
- FULL STREET RECONSTRUCTION
- SIDEWALK INFILL / SELECTIVE STREET TREE PLANTING
- SIGNAGE & STRIPING
- TEP GRANT
- BUS STOP ENHANCEMENTS



HUDSON, NY



23B

TO CITY HALL

TO HUDSON AREA LIBRARY

Charles Williams Park

An aerial photograph of a city street, overlaid with a semi-transparent blue filter. The street features several murals and painted text. At the top, a mural reads "BLACK LIVES MATTER" in large, white, block letters. Below it, a colorful mural depicts a group of people. At the bottom, a mural reads "HUDSON CONNECTS" in white, block letters. The street is lined with trees and buildings, and a few cars are visible. The overall scene is a vibrant urban environment.

DESIGN REFERENCES



DESIGN REFERENCES

Historic References

*“The streetscape should provide a ground plane that **supports the historic fabric** and does not detract from it. The materials themselves should be **authentic and reflect that history.**”*

Challenges

- Improvements are limited primarily to the corners
- Existing patchwork of materials
- Budgetary constraints

HUDSON, NY





DESIGN REFERENCES

Historic Hudson References



HUDSON, NY





DESIGN REFERENCES

Historic Hudson References



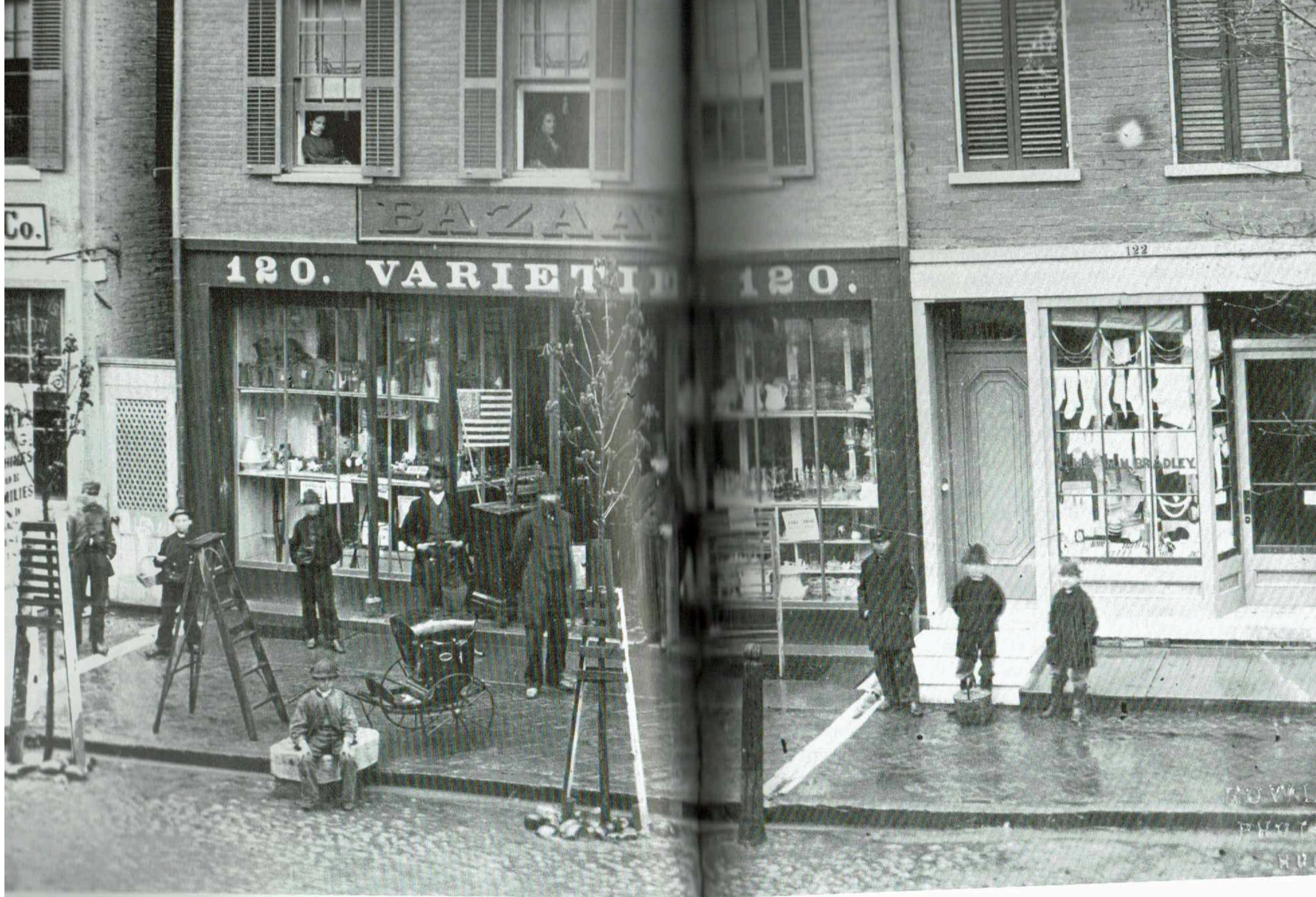
HUDSON, NY





DESIGN REFERENCES

Historic Hudson References



HUDSON, NY





DESIGN REFERENCES

Historic Hudson References

HUDSON, NY



**DESIGN
REFERENCES**

**Conservation
Advisory
Council
Guidance**



- PERMEABLE MATERIALS- CHIP SEAL POROUS ASPHALT, AFFORDABLE, DURABLE AND EASILY REPLACED
- STRATEGICALLY PLACED HISTORIC MATERIALS: GRANITE LIVE EDGE COBBLES AND THERMAL CURB
- TEXTURE CHANGE FOR WALKS
- PLANTINGS AND PATTERN CHANGE FOR REST NODES

HUDSON, NY

DESIGN REFERENCES

HPC Guidance References



HUDSON, NY

- BIOSWALE PLANTINGS TO CAPTURE STORMWATER
- LARGE RATIO OF GREENSPACE
- SIGNAGE CAPTURED IN GREEN SPACE, PREVENTS TRIP HAZARD OR PEDESTRIAN IMPEDIMENT
- SHADE TREES / URBAN HEAT ISLAND OR IN GROUPINGS TO CREATE MORE MEANINGFUL HABITAT



DESIGN REFERENCES

Historic Urban References

HUDSON, NY



Stone Street, NYC



DESIGN REFERENCES

Historic Urban References



HUDSON, NY



Stone Street, NYC



DESIGN REFERENCES

Historic Urban References



HUDSON, NY



South Street Seaport area - NYC



DESIGN REFERENCES

Historic Urban References



HUDSON, NY





DESIGN REFERENCES

Historic Urban References



HUDSON, NY





DESIGN REFERENCES

Historic Urban References



HUDSON, NY





DESIGN REFERENCES

Historic Urban References

HUDSON, NY

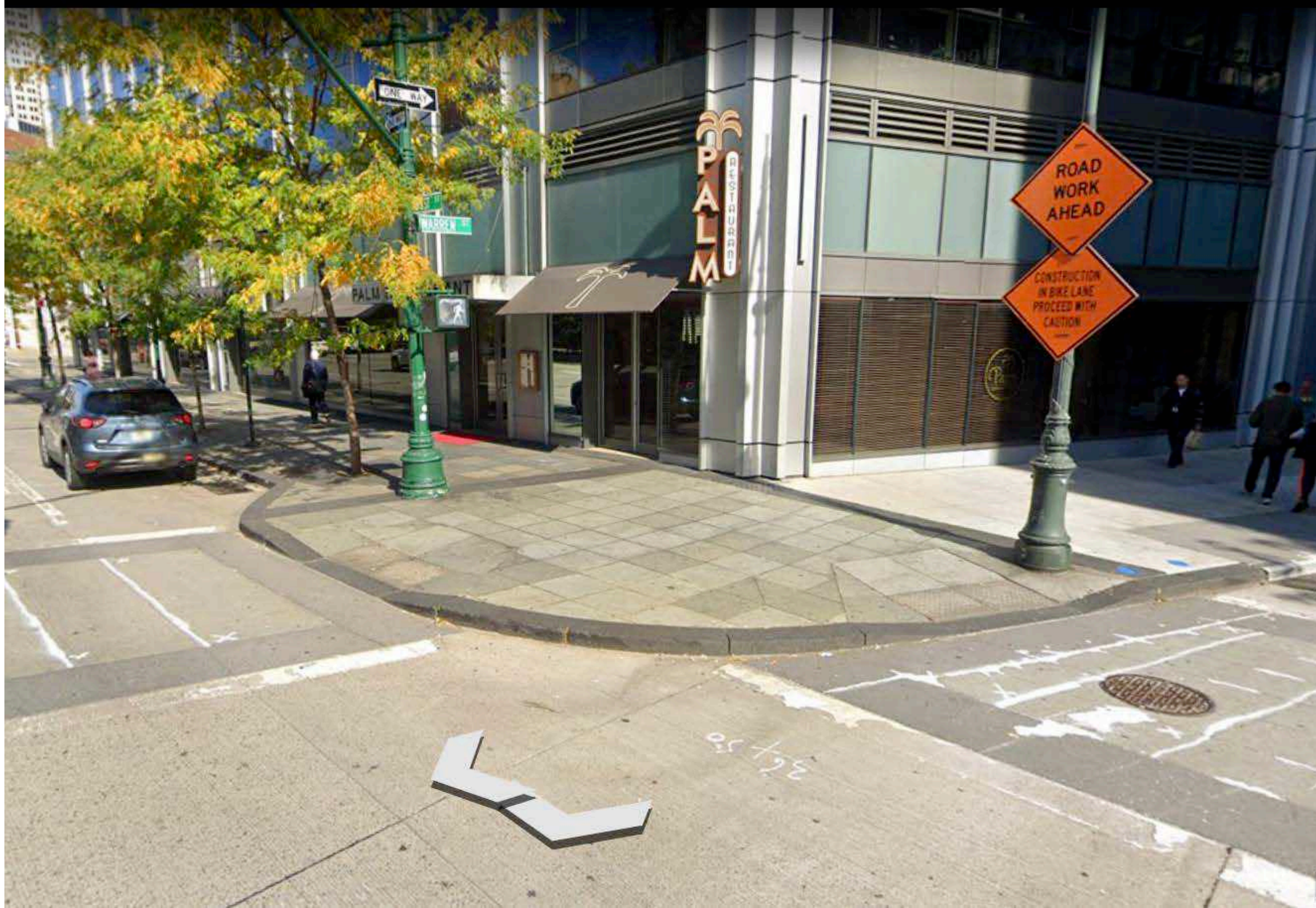


Lafayette Avenue - Brooklyn, NY



DESIGN REFERENCES

Historic Urban References



HUDSON, NY

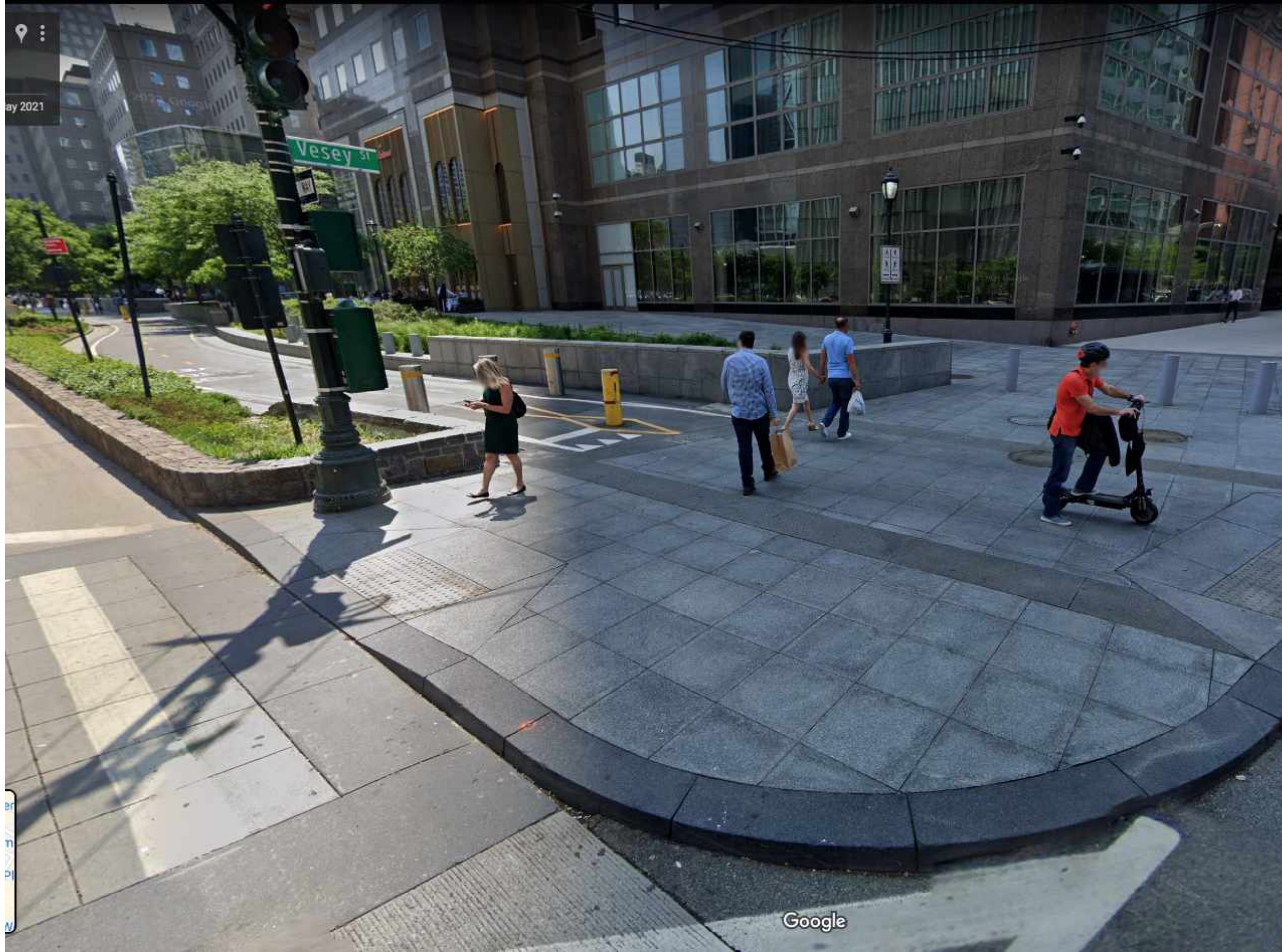




DESIGN REFERENCES

Historic Urban References

HUDSON, NY





MATERIALS AND FURNITURE

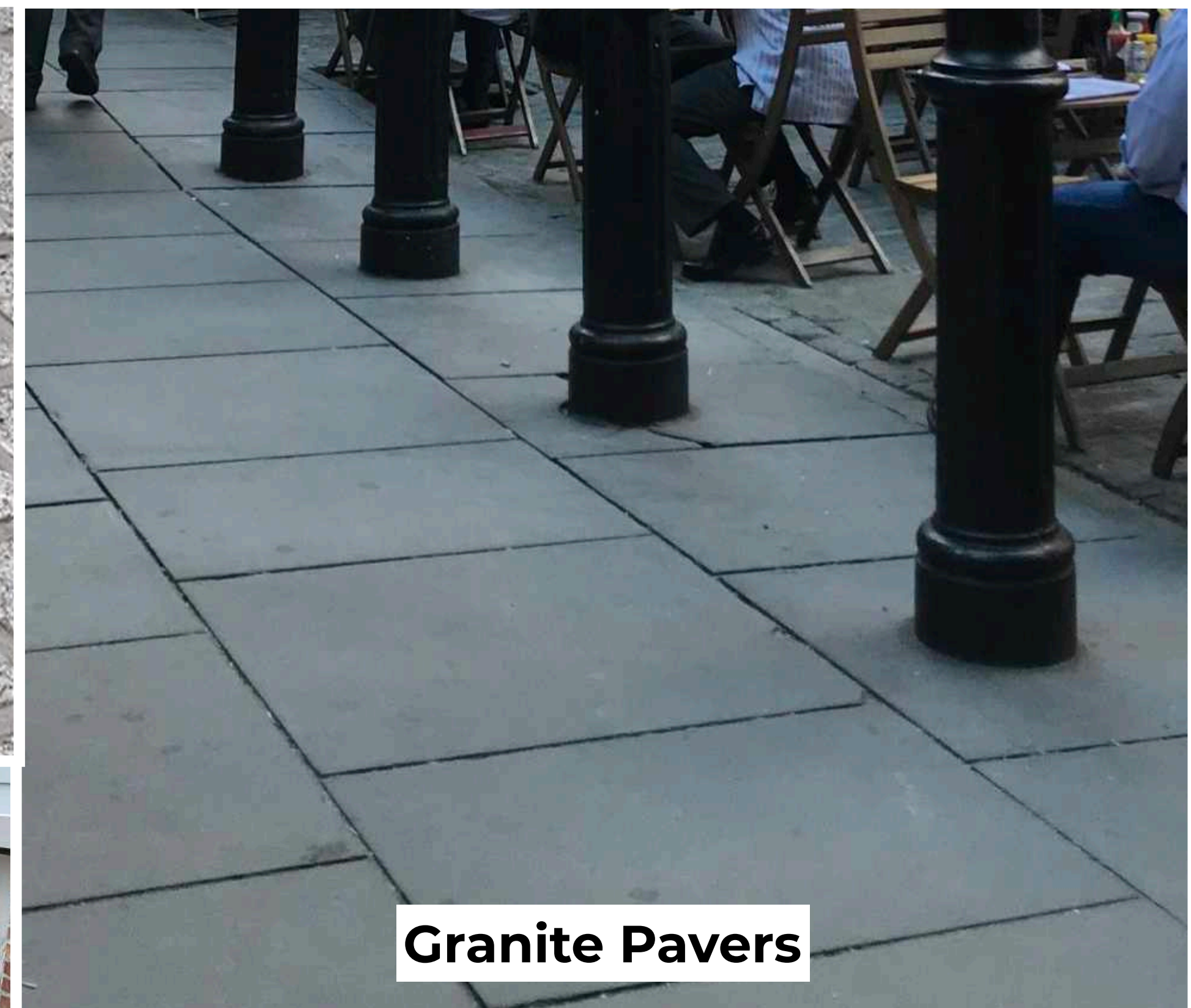


FURNITURE & MATERIAL APPROACH

Material Palette



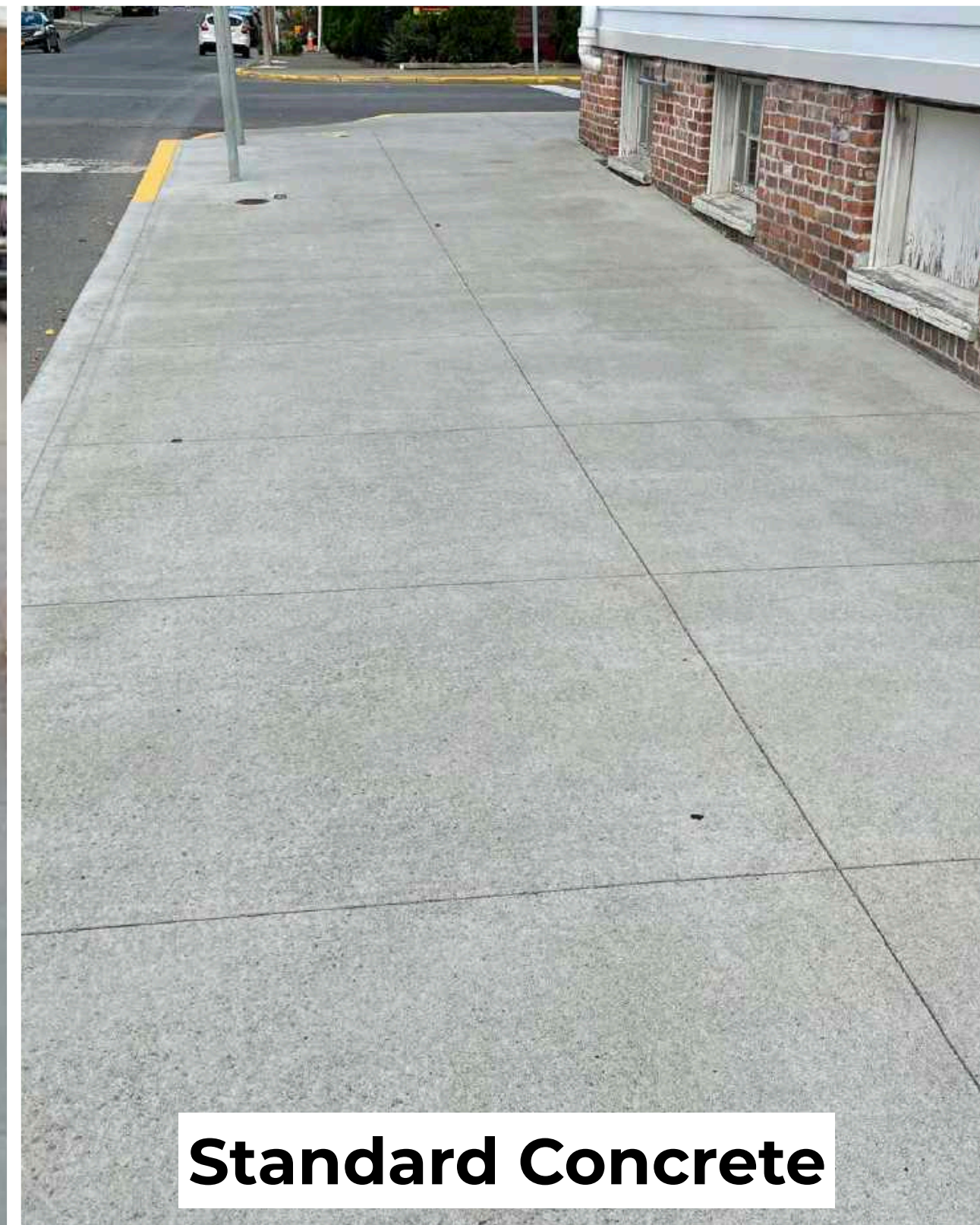
Granite setts



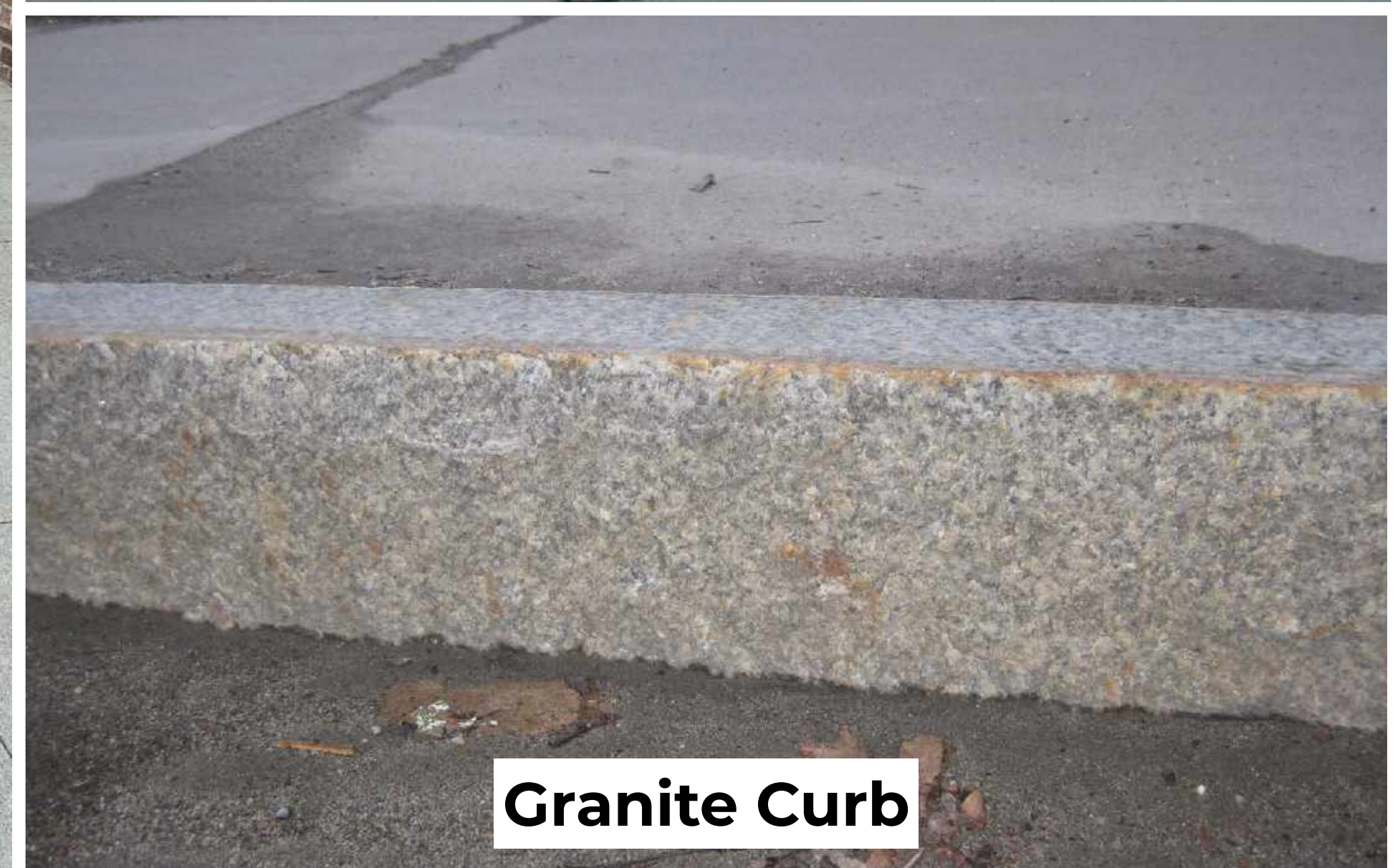
Granite Pavers



Tinted Concrete



Standard Concrete



Granite Curb

HUDSON, NY



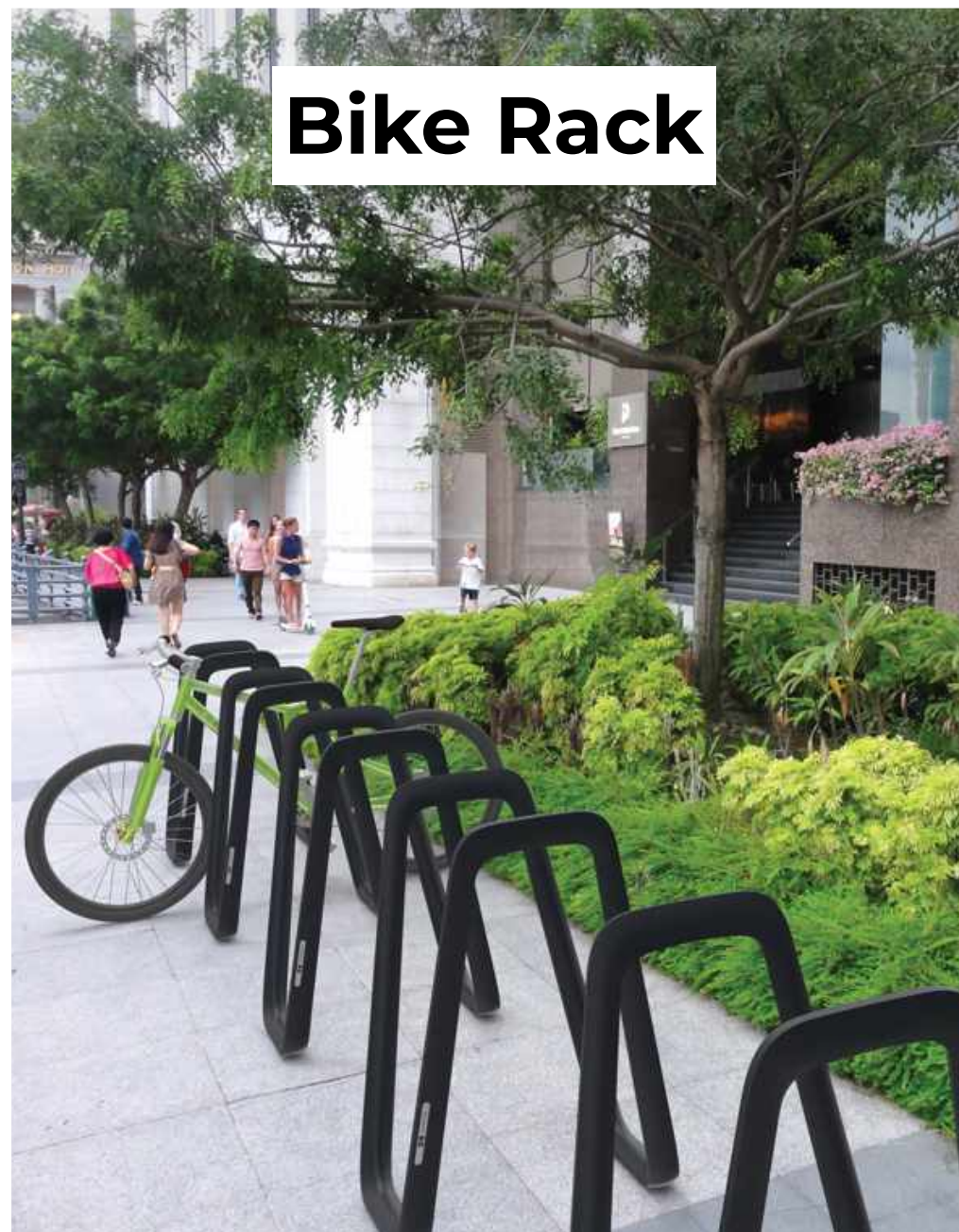


FURNITURE & MATERIAL APPROACH

Furniture Palette



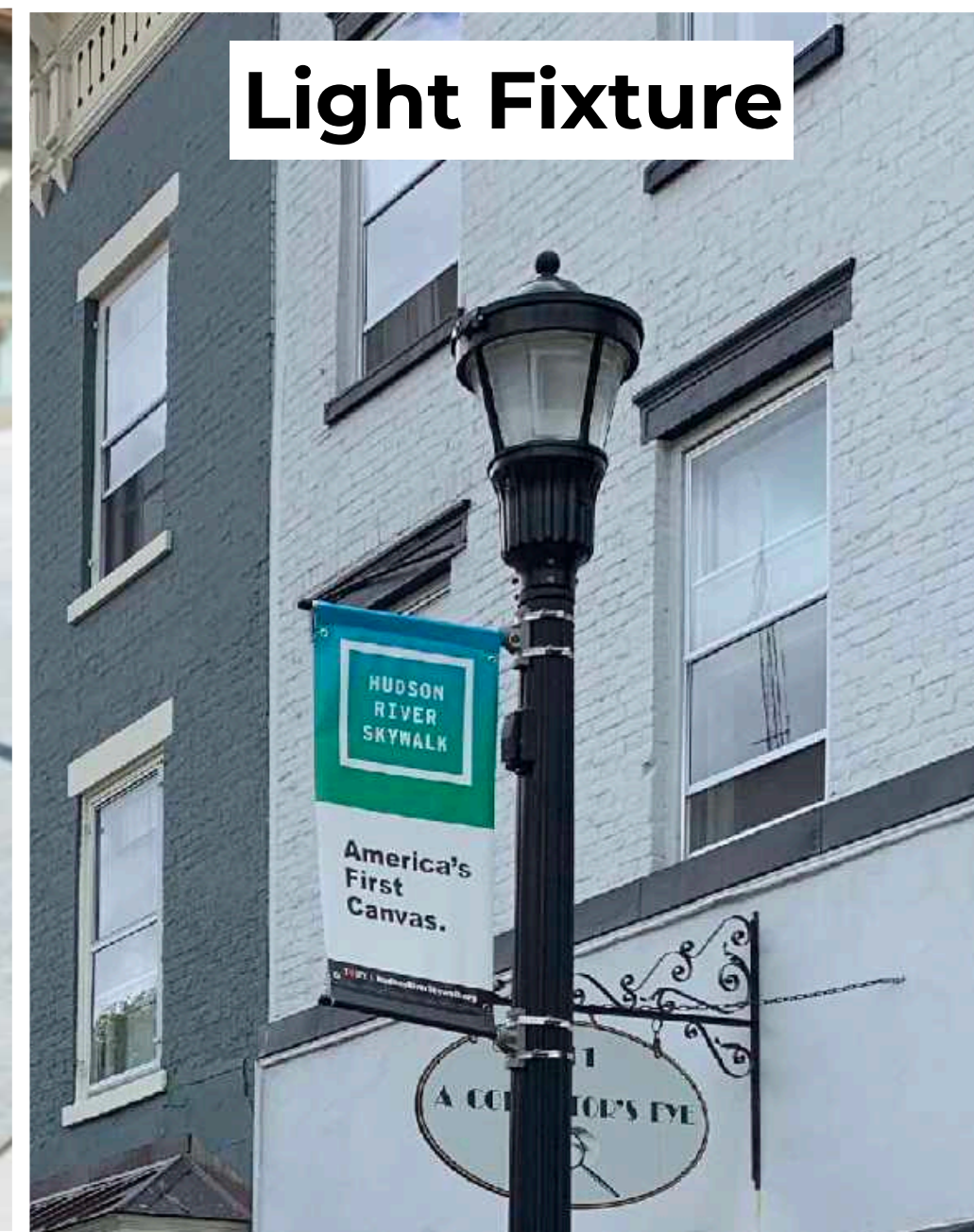
Tree Pit Guard



Bike Rack



Bollard



Light Fixture

Benches



Trash Receptacle

HUDSON, NY



RESIDENTIAL INTERSECTIONS

Allen Street
Union Street
Columbia Street
State Street



RESIDENTIAL STREETS

Allen Street

Union Street

Columbia Street

State Street

-  Unique Intersections
-  Standard Intersections
-  Residential Street
-  Neighborhood Drive



HUDSON, NY





RESIDENTIAL STREETS

Allen Street

Union Street

Columbia
Street

State Street



HUDSON, NY



TYPICAL RESIDENTIAL INTERSECTION

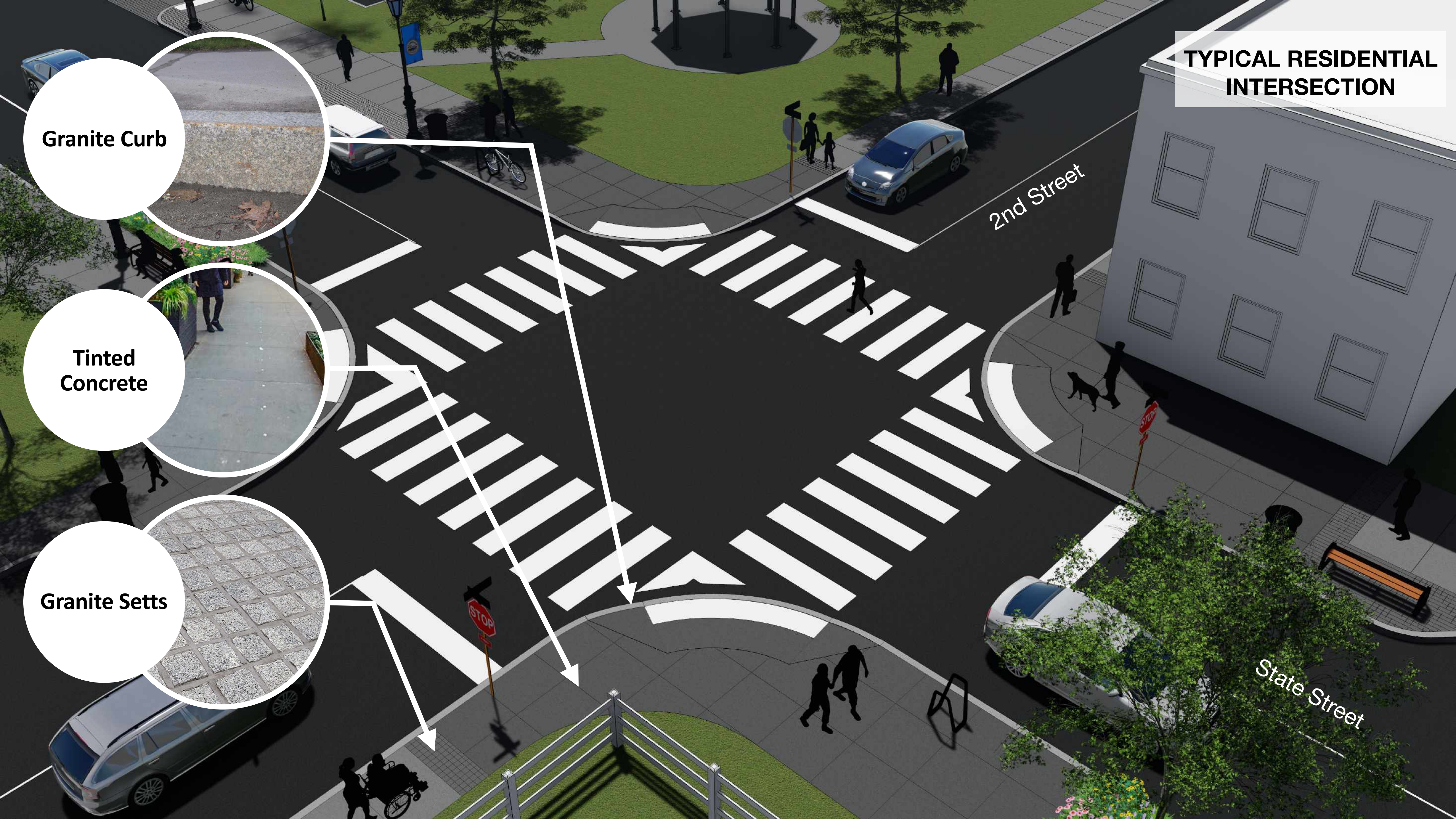
Granite Curb

Tinted Concrete

Granite Setts

2nd Street

State Street





WARREN STREET INTERSECTIONS



WARREN STREET INTERSECTIONS

Scope



HUDSON, NY





WARREN STREET INTERSECTIONS

Second Street



HUDSON, NY



**WARREN & 2ND ST.
INTERSECTION**



**WARREN & 2ND ST.
INTERSECTION**

**Granite
Pavers**

Granite Setts

Granite Setts

Granite Curb





WARREN STREET INTERSECTIONS

First Street



HUDSON, NY





**WARREN & 1ST ST.
INTERSECTION**

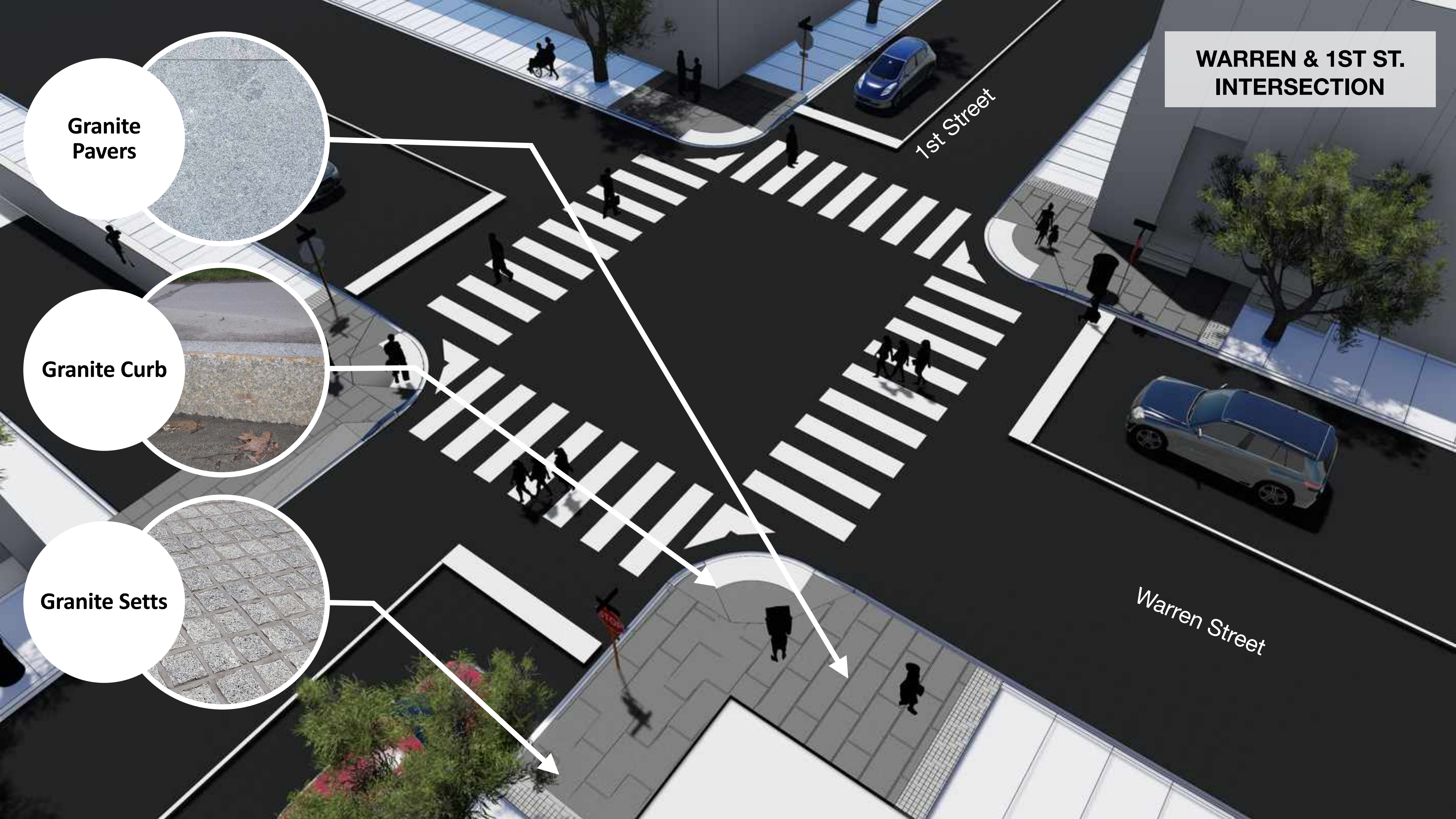
**Granite
Pavers**



Granite Curb



Granite Setts



**WARREN & 1ST ST.
INTERSECTION**

**Granite
Pavers**

Granite Curb

Granite Setts





WARREN STREET INTERSECTIONS

Front Street



HUDSON, NY

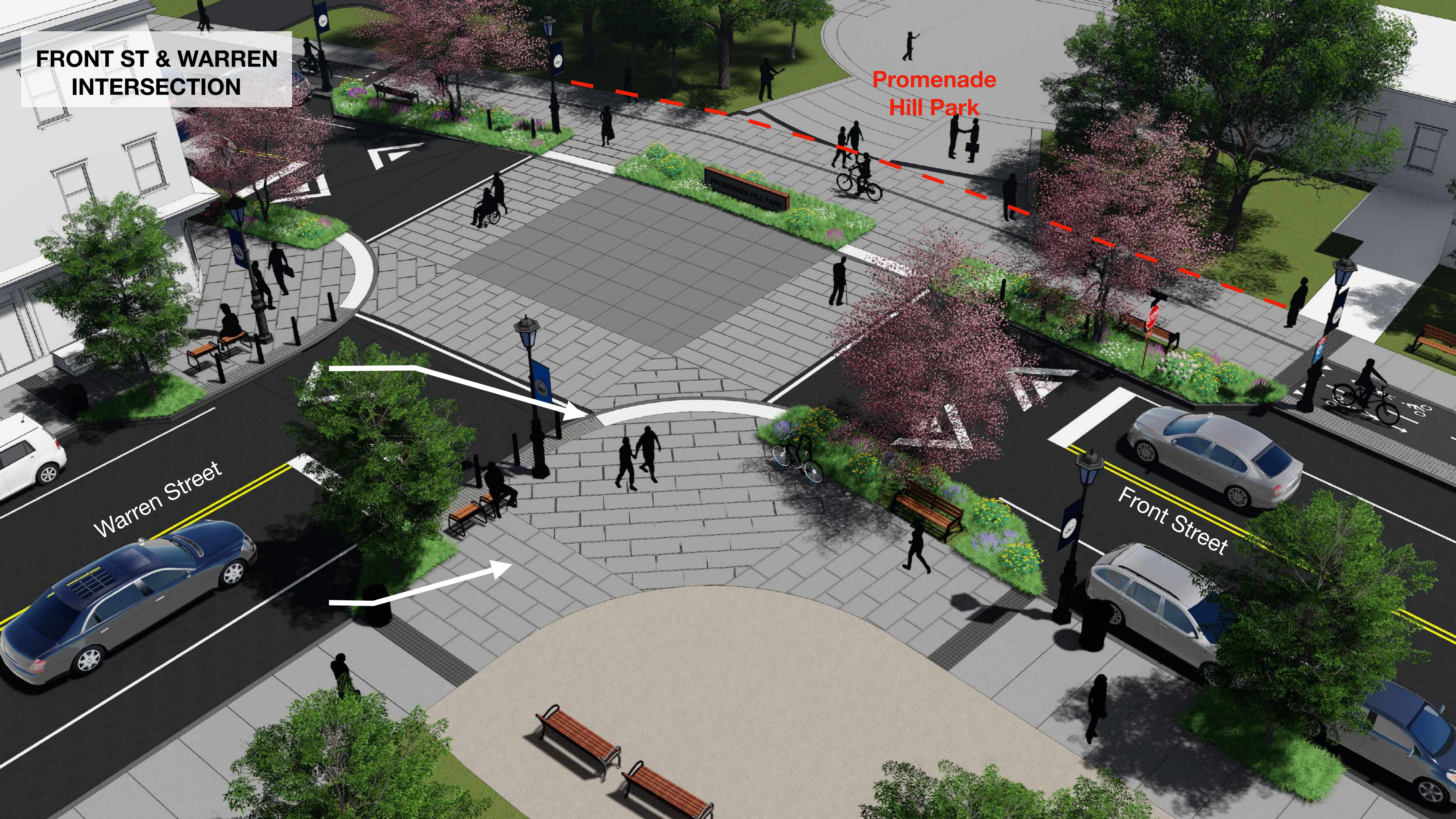


**FRONT ST & WARREN
INTERSECTION**

Promenade
Hill Park

Warren Street

Front Street



FRONT ST & WARREN INTERSECTION

Promenade Hill Park



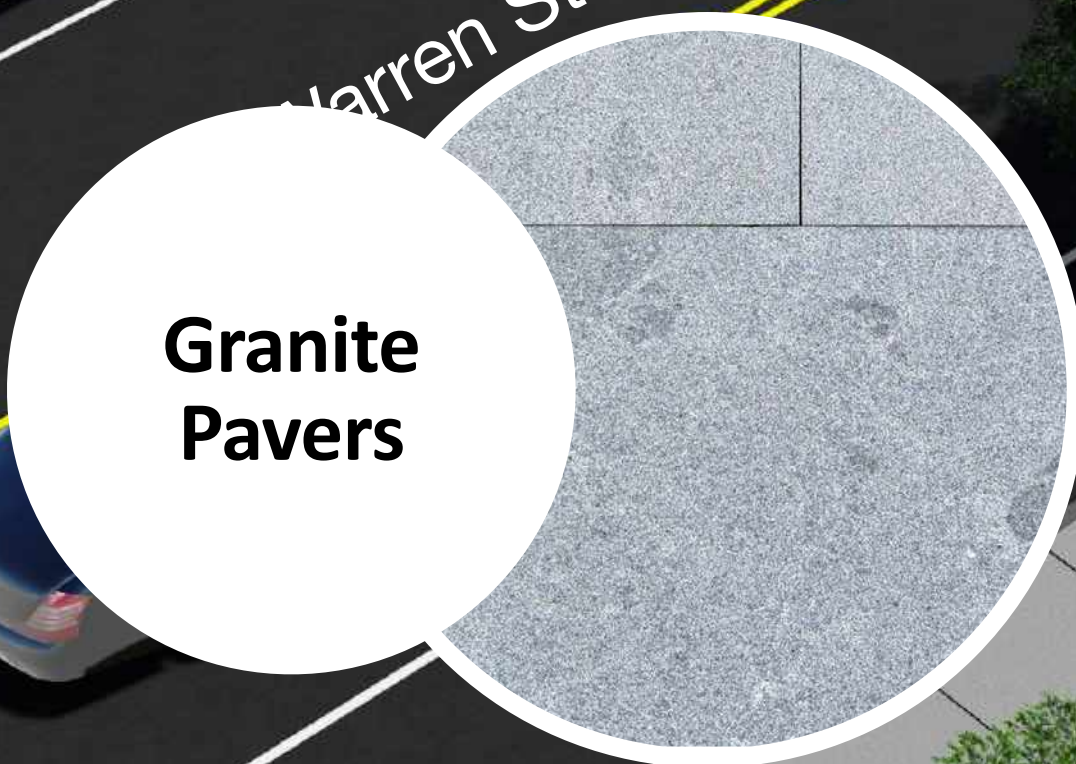
Granite Pavers



Granite Curb



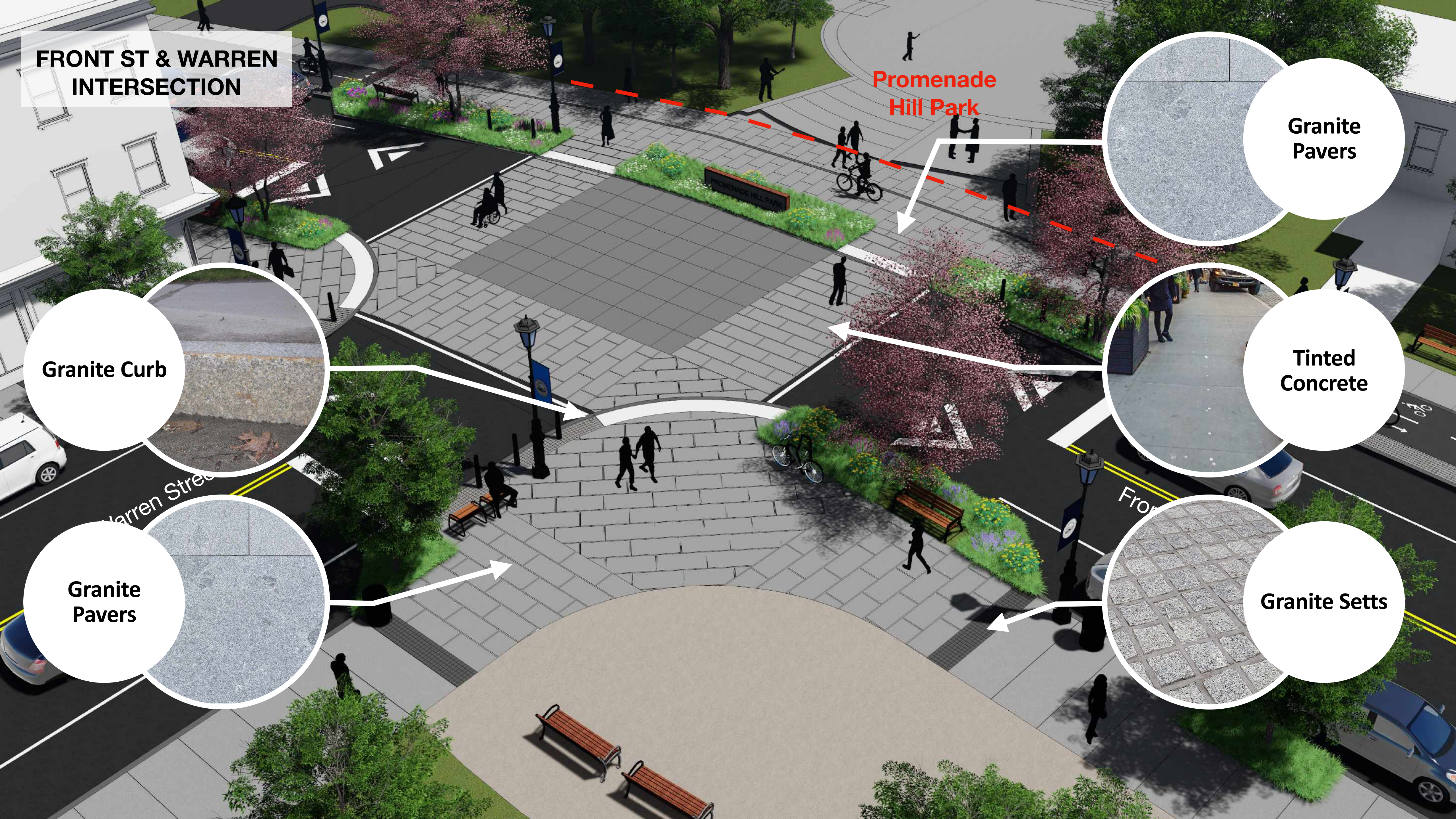
Tinted Concrete



Granite Pavers



Granite Setts



An aerial photograph of a city street, likely in New York City, featuring murals and a blue overlay. The street is lined with brick buildings and trees. A mural on the street reads "BLACK LIVES MATTER" and "HUDSON CONNECTS". The text "NEXT STEPS" is overlaid in white on a blue background.

NEXT STEPS



NEXT STEPS

Phase 2 - Design and Implementation

Schematic Design, Engineering & Estimates	October 2021
--	---------------------

HPC Coordination - Furniture + Material	October 2021
---	--------------

Public Presentation to Common Council	December 2021
---------------------------------------	---------------

HUDSON, NY



THANK YOU

